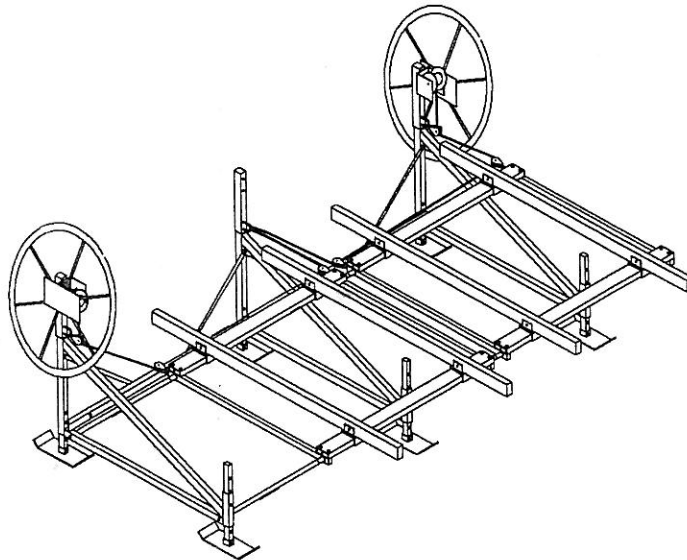


855 SHOREMASTER PERSONAL WATERCRAFT LIFT ADD-ON

- OWNER AND OPERATORS MANUAL - Model 855 ADD-ON

**** (Formerly 655 Add On) ****

Maximum Load 800 Pounds - Inside Lift Width 55"



855 Personal Watercraft Lift

Manufactured by ShoreMaster Inc.

Revision No. (4) 11-01-96

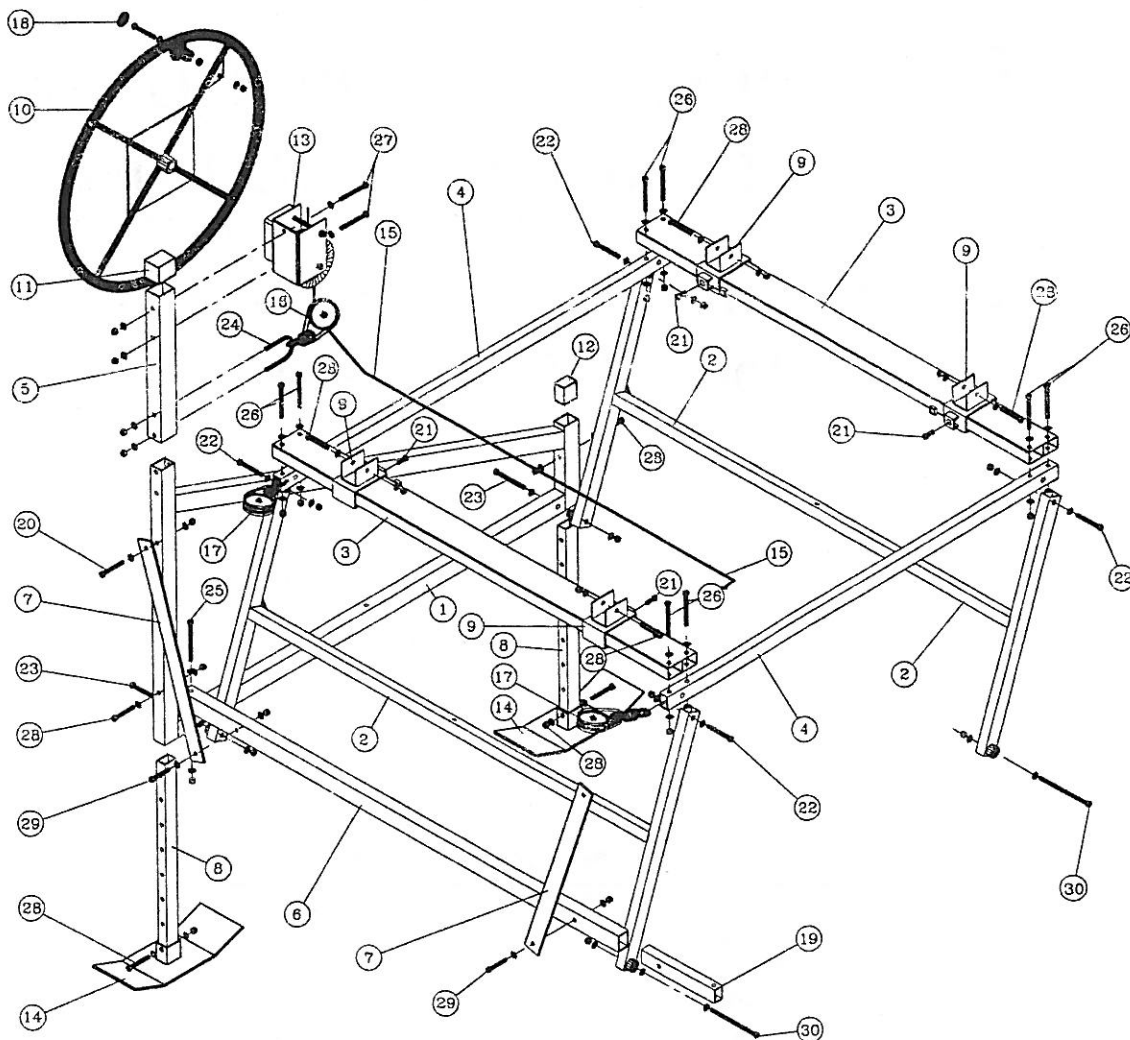
ShoreMaster Inc.

1 ShoreMaster Drive - PO Box 358

Fergus Falls, MN 56538-0358

1-800-328-8945

MODEL 855 ADD ON



#	DESCRIPTION
1	LIFT SIDE - 54", (1)
2	I - BEAM - 55", (2)
3	RACK PLANK BEAM - 54 1/2", (2)
4	RACK SIDE BEAM - 54 3/4", (2)
5	UPRIGHT EXTENSION - 17 1/2", (1)
6	FRONT BOTTOM BEAM - 60", (1)
7	LIFT BRACE - 24", (2)
8	2' LIFT LEG POST, (2)
9	855 CRADLE BRACKET, (4)
10	LIFT WHEEL - SMALL, (1)
11	#3 BLUE CAP, (1)
12	#6 BLUE CAP, (1)
13	1202 D.I. WINCH, (1)
14	DETACHABLE LIFT PADS B-2, (2)
15	3/16" x 12' STAINLESS STEEL CABLE, (1)
16	PLASTIC PULLEY COMPLETE - 2 LINK, (1)
17	PLASTIC PULLEY COMPLETE - 3 LINK, (2)
18	SPINNER KNOB ASSEMBLY, (1)
19	10" SPACER TUBE, (1)
20	(1) 3/8" x 2 3/4" MACHINE BOLT, (2) 3/8" WASHERS, (1) 3/8" NUT, (1 PLACE)
21	(1) 1/2" x 1 1/4" SQUARE HEAD BOLT, (1) 1/2" SQUARE HEAD NUT, (4 PLACES)
22	(1) 1/2" x 3 1/2" MACHINE BOLT, (3) 1/2" WASHERS, (1) 1/2" NYLOCK NUT, (4 PLACES)
23	(1) 1/2" x 4 1/2" MACHINE BOLT, (3) 1/2" WASHERS, (1) 1/2" NYLOCK NUT, (2 PLACES)
24	(1) 3/8" x 4" U-BOLT, (2) 3/8" WASHERS, (2) 3/8" NUTS, (1 PLACES)
25	(1) 3/8" x 4 1/2" MACHINE BOLT, (2) 3/8" WASHERS, (1) 3/8" NUT, (1 PLACES)
26	(1) 3/8" x 4" MACHINE BOLT, (2) 3/8" WASHERS, (1) 3/8" NUT, (6 PLACES)
27	(1) 3/8" x 3 1/4" MACHINE BOLT, (2) 3/8" WASHERS, (1) 3/8" NUT, (2 PLACES)
28	(1) 3/8" x 2 1/2" MACHINE BOLT, (2) 3/8" WASHERS, (1) 3/8" NUT, (8 PLACES)
29	(1) 3/8" x 2 1/4" MACHINE BOLT, (2) 3/8" WASHERS, (1) 3/8" NUT, (2 PLACES)
30	(1) 1/2" x 6 1/2" MACHINE BOLT, (4) 1/2" WASHERS, (1) 1/2" NYLOCK NUT, (2 PLACES)

TABLE OF CONTENTS

<u>PAGE</u>	<u>SECTION</u>
3	Introduction
3	Warnings and Safety
4-5	Parts List 855 Add On
6	Reference Drawing for 855 Add On
7-14	Assembly 855 Add On on to existing 855 Lift
15-16	Installation
17-19	Operation -Loading, Raising, Lowering
20	Removal and Storage
21	Service

INTRODUCTION

ShoreMaster 855 lifts will lift your personal watercraft up and out of the water for dockside storage. The 855 is designed to rest on a stable, shallow water lake bottom. The lifts are available in a single 855 model or an 855 Add On. The 855 Add On can only be used in combination with an 855 lift. A properly positioned lift provides safe, convenient, quick mooring for your craft.

The lift functions by turning the lift hand wheel clockwise to raise the lift. Properly position your craft in the lift and it will raise with the lift rack. The wheel is turned counterclockwise to lower the lift.

Information in this manual is not all inclusive and cannot cover all unique situations. **If you have questions about assembly, installation, operation or suitability of this product contact an authorized ShoreMaster dealer or ShoreMaster toll-free 1-800-328-8945.**

WARNINGS AND SAFETY

Your **SAFETY** is the most important issue related to this product. It is critical that all assemblers, installers and users read and fully understand the warnings and safety information contained throughout this manual before using this product.

Safety Instructions

Never exceed recommended weight capacity of your lift. The weight of your craft includes the hull, engine, fuel, gear and added accessories. The dry weight reported by the manufacturer usually includes only the basic watercraft. The craft manufacturers reported weights can be understated by 10% or more! This is before you add fuel, fluids, accessories, etc.! Weigh your craft at a certified scale to be absolutely sure of the total

weight. You will be lifting more than the reported dry weight when everything is considered.

- A properly educated or trained person is needed for assembly and installation of this product. Call ShoreMaster if you have questions.
- Wear proper protective clothing and eye wear when assembling or installing lift.
- Do not assemble, install or use this product if items are missing or damaged.
- If fast spin down of wheel occurs do not touch wheel or attempt to stop. Allow your craft to splash into water, it should not damage your craft! Placing hands or feet on spinning wheel can cause broken or cut limbs.
- **WARNING** - Stay clear of lift (facing wheel) while operating. Do not allow anyone on, in or under lift. A cable or lift part failure can cause a sudden drop of craft, resulting in a crushing or falling injury or death!
- Do not allow people on craft when craft is on lift in raised position.
- Do not make alterations or adjustments to lift or accessories when watercraft is on lift.
- Check cables for frays, corrosion or breaks at least once a month. A cable breaking while craft is in lift could damage craft or lift. Severe bodily injury could also occur.

855 ADD ON PARTS LIST

Before assembly, identify each part. Remove parts from boxes, bags and bundles. Mark each item with the proper part letter (indicated in the left-hand column). This will confirm that all parts are here before beginning assembly and allows you to easily follow the assembly instructions.

855 Add On Winch Box & Bolt Bag

<u>Part ID</u>	<u>Qty.</u>	<u>Description</u>
AA	2	Pulley with 3 Link Chain
BB	1	Pulley with 2 Link Chain
CC	1	Cable (3/16" x 12')
DD	1	Winch (1202 Dutton)
EE	1	#6 Blue Caps
FF	1	#3 Blue Caps
GG	1	Wheel to Winch Bolt Kit & Winch Rope Clamp Bag

Bolt Bag:

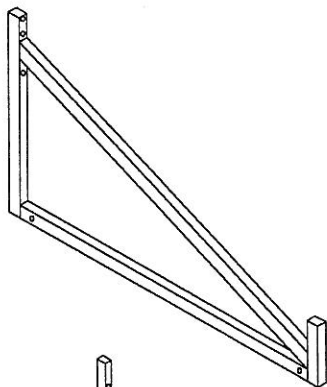
1 - 3/8" x 4" U-Bolts
2 - 3/8" x 2 1/4" Hex Bolts
4 - 3/8" x 2 1/2" Hex Bolts
5 - 3/8" x 2 3/4" Hex Bolts
1 - 3/8" x 3" Hex Bolt
2 - 3/8" x 3 1/2" Hex Bolts
8 - 3/8" x 4" Hex Bolt
1 - 3/8" x 4 1/2" Hex Bolts
4 - 1/2" x 3 1/2" Hex Bolts
2 - 1/2" x 3 1/2" Hex Bolts
2 - 1/2" x 4 1/2" Hex Bolts
2 - 1/2" x 6 1/2" Hex Bolts
4 - 1/2" x 1 1/4" Square Head Bolts
25 - 3/8" Nuts
8 - 1/2" Locking Nuts
4 - 1/2" Square Nuts
44 - 3/8" Washers
24 - 1/2" Washers
1 - Set Screw Wrench

Tools Needed For Assembly

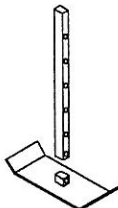
2 - 9/16" Combo Wrench
2 - 3/4" Combo Wrench
1 - 7/16" Combo Wrench
1 - 6' Piece of Strong Nylon Rope

****A set screw (square head bolt) wrench is provided in the bolt bag. Use this to tighten set screws. This will prevent you from over tightening and breaking off nut holders by using to large a wrench!**

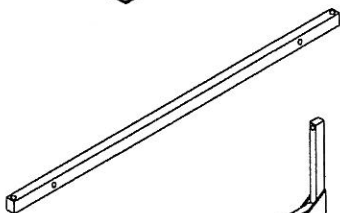
PART A
LIFT SIDE
QTY 1



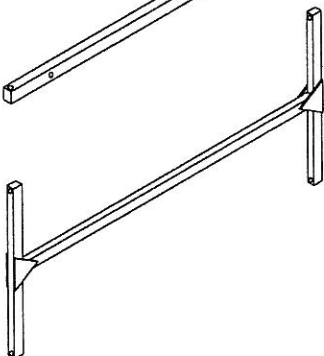
PART B
LEG
QTY 2



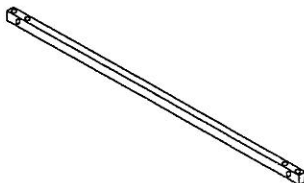
PART C
FRONT BOTTOM BEAM
QTY 1



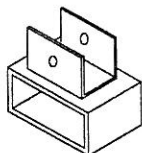
PART D
I-BEAM
QTY 2



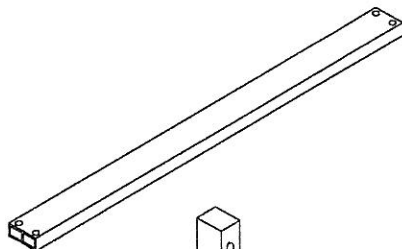
PART E
RACK SIDE
QTY 2



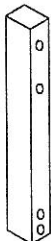
PART F
CRADLE BRACKET
QTY 4



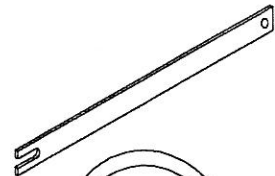
PART G
RACK PLANK
QTY 2



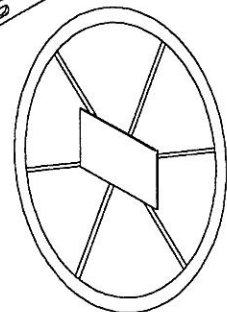
PART H
EXTENSION TUBE
QTY 2



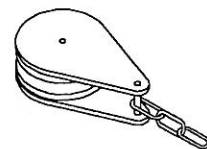
PART I
BRACE
QTY 2



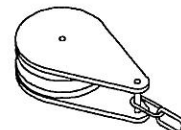
PART J
WHEEL
QTY 1



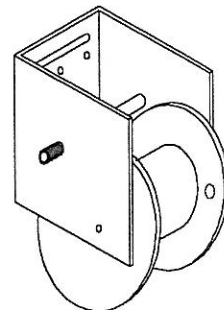
PART AA
PULLEY WITH
3 LINK CHAIN
QTY 2
INCLUDED IN
WINCH/HARDWARE BOX



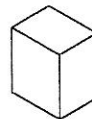
PART BB
PULLEY WITH
2 LINK CHAIN
QTY 1
INCLUDED IN
WINCH/HARDWARE BOX



PART DD
WINCH (1202 DUTTON)
QTY 1
INCLUDED IN
WINCH/HARDWARE BOX



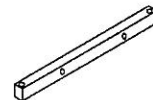
PART EE
#6 BLUE CAP
QTY 2
INCLUDED IN
WINCH/HARDWARE BOX



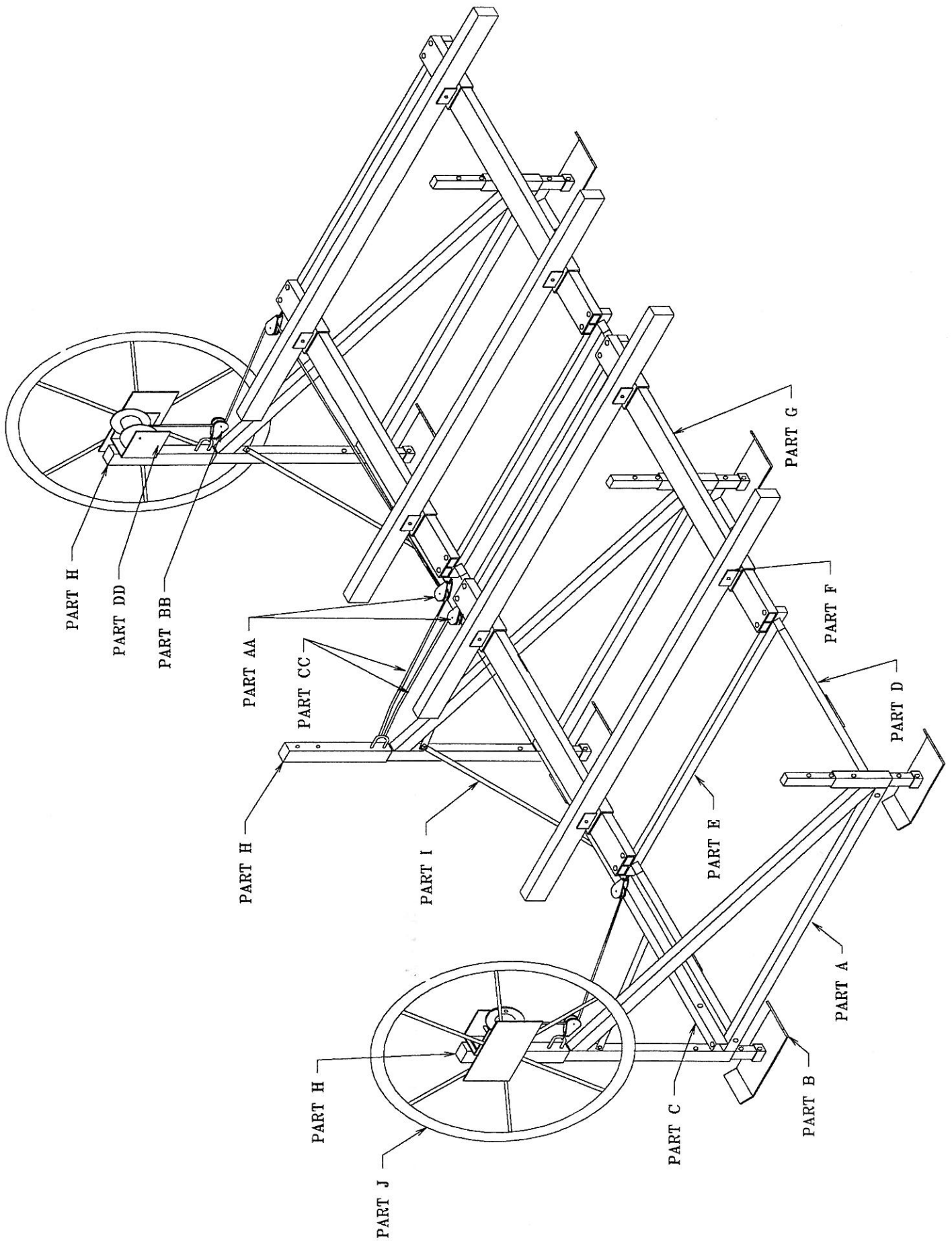
PART FF
#3 BLUE CAP
QTY 2
INCLUDED IN
WINCH/HARDWARE BOX



PART M
FRONT BOTTOM
BEAM SPACER
QTY 1



Reference Drawing For 855 Add On



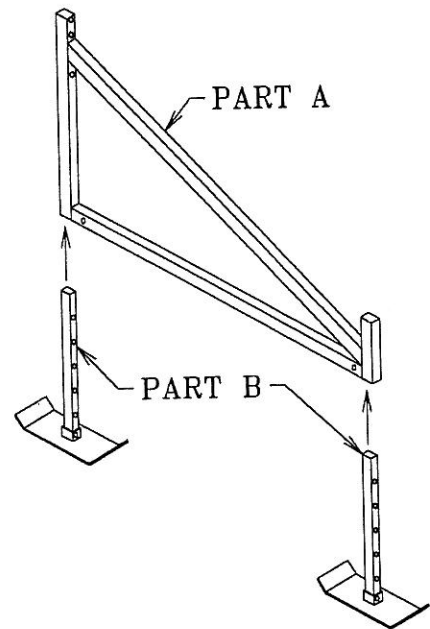
ASSEMBLY OF 855 ADD ON

(to a previously assembled 855)

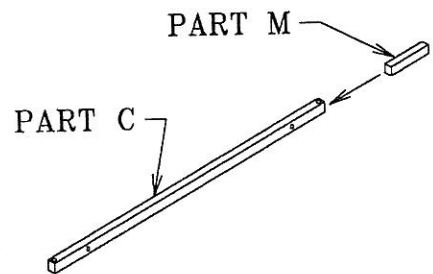
****Fully read and understand each step before proceeding with that step.**

****Only hand tighten bolts and nuts until lift is completely assembled.**

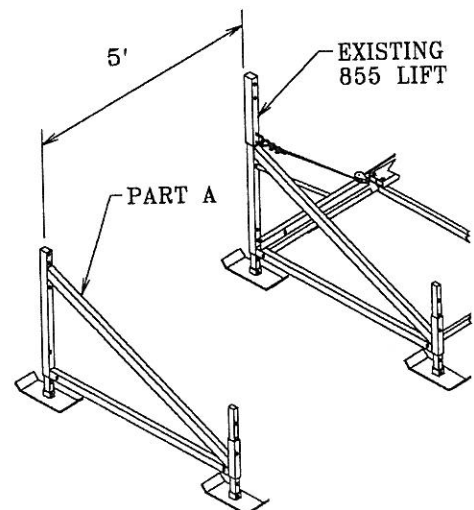
#1 Insert all B Parts (Legs) into leg pads & secure. Using (2) $3/8''$ x $2\ 1/2''$ Hex bolt with nut & washers.



#2 Attach part M (front bottom beam spacer) to part C (front bottom beam) as shown. Use one $3/8''$ x $2\ 1/4''$ hex bolt with $3/8''$ nut and washers.

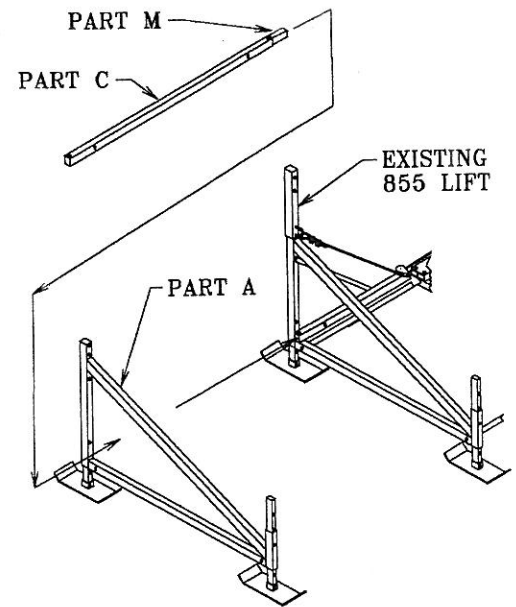


#3 Place A part about five feet from assembled 855 lift as shown. Attach C part to A part as shown. Use one $3/8''$ x $4\ 1/2''$ hex bolt with $3/8''$ nut & washers.

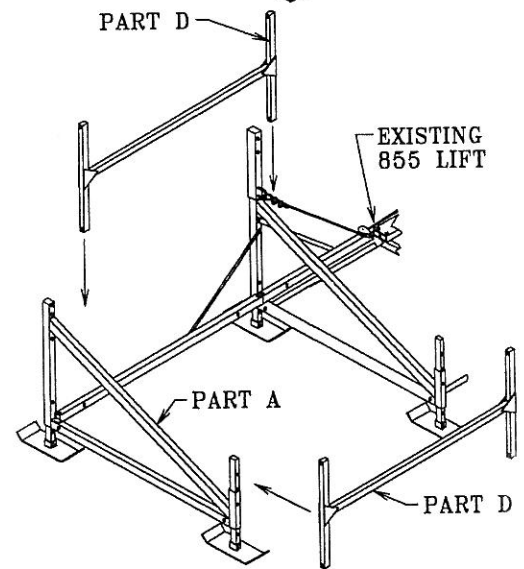


- #4 Remove the 3/8" x 4 1/2" hex bolt and nut holding front bottom beam to lift side of existing 855 lift. Slide M part into front bottom beam of existing lift as shown. Reattach 3/8" x 4 1/2" hex bolt with 3/8" nut & washers.

Note: Always attach 855 Add On to the side opposite winch of your existing 855 lift.



- #5 Remove two 1/2" x 4 1/2" hex bolts on existing 855. Remove the two that currently hold I-beam to lift side (opposite winch) as shown. Save the bolts, washers and lock nuts for Step 7.

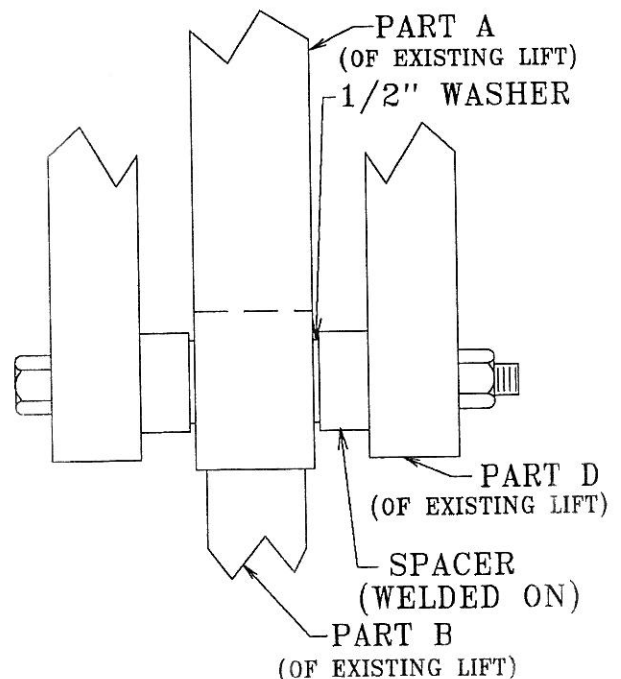


- #6 Attach the two D parts (I-beams) to existing 855 lift side along with existing lifts I-beams as shown. Use (2) 1/2" x 6 1/2" hex bolts with (6) 1/2" washers & (2) 1/2" lock nuts.

Note: The I-Beam ends with spacers welded on is the end attached to A parts.

Note: Washers are placed between D parts and A part on each connection.

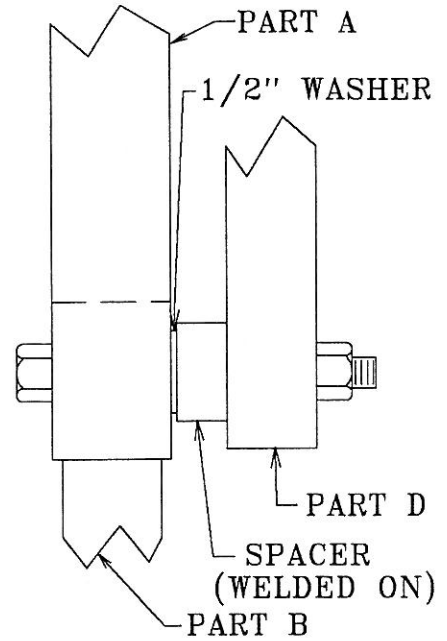
Note: Do not over tighten lock nuts. This connection must move freely during operation.



#7 Bolt other side of two D parts to A part as shown. Use the existing two 1/2" x 4 1/2" hex bolts with 1/2" washers and 1/2" nuts set aside from Step 5.

Note: Washers are placed between D parts and A part.

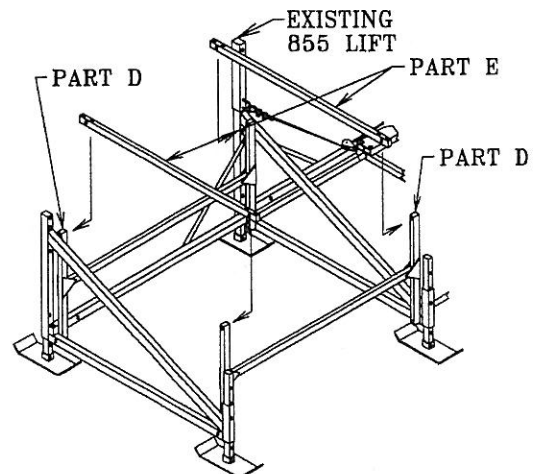
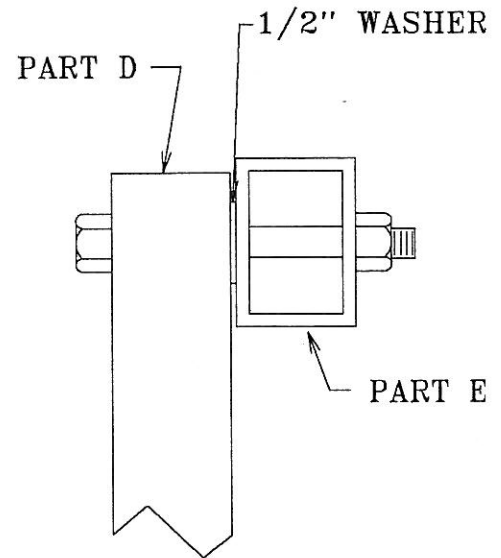
Note: Do not over tighten lock nuts. This connection must move freely during operation.



#8 Attach two E parts (rack sides) to upper holes in D parts as shown. Use (4) 1/2" x 3 1/2" hex bolts with 1/2" washers and 1/2" lock nuts.

Note: Washer is placed between D part and E part.

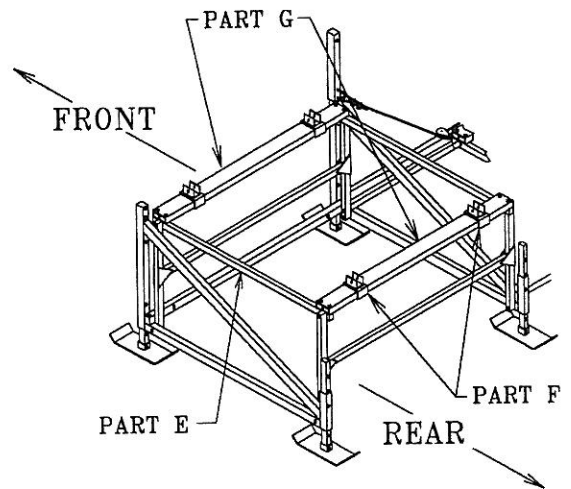
Note: Do not over tighten lock nuts. This connection must move freely during operation.



- #9 Attach two G parts (rack planks) to E parts as shown. Fully attach rear G part using (4) 3/8" x 4" hex bolts with 3/8" nuts & washers. Attach only (2) 3/8" x 4" hex bolts with 3/8" nuts to front G part. Do not place bolts in the (2) holes in front G part that face toward outside of lift.

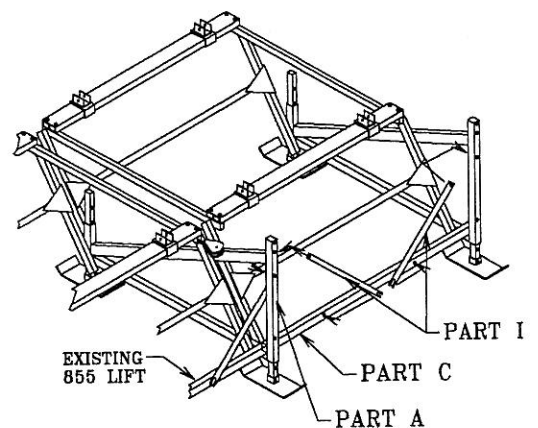
Notice: Be sure F parts (cradle brackets) are on G parts. F parts will be adjusted in a later step.

Notice: Nut holders on G parts should face toward inside of lift to prevent any chance of scratching craft when entering lift.



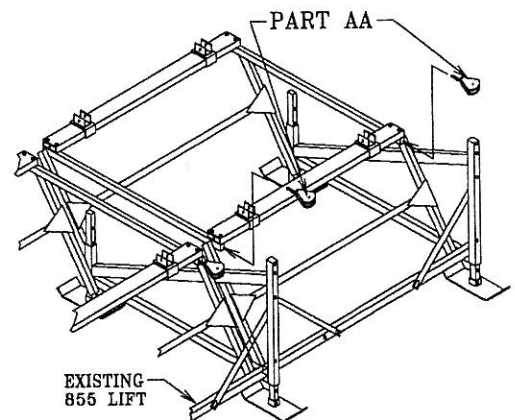
- #10 Attach the I part (brace) to A & C parts as shown. The A part connection uses (1) 3/8" x 2 3/4" hex bolt with 3/8" nut & washers. The C part connection use 3/8" x 2 1/4" hex bolt with 3/8" washer & 3/8" nut.

Note: Slotted end of I part is attached to C part. Hole in I part attaches to A part.



- #11 Attach two AA parts(pulley w/3 link chain) to front G part as shown. Use two 3/8" x 4" hex bolt with 3/8" nuts & washers.

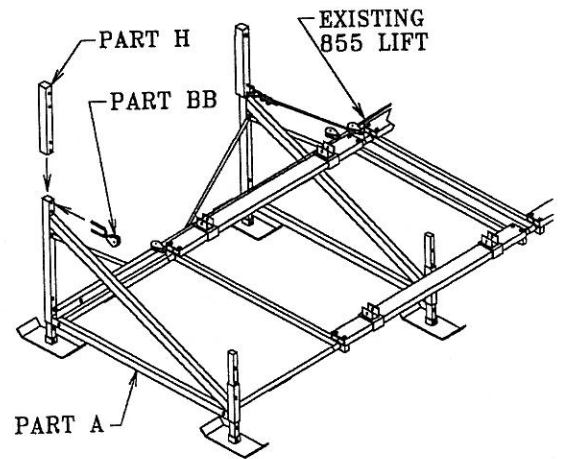
Note: This completes the attachment process for front G part.



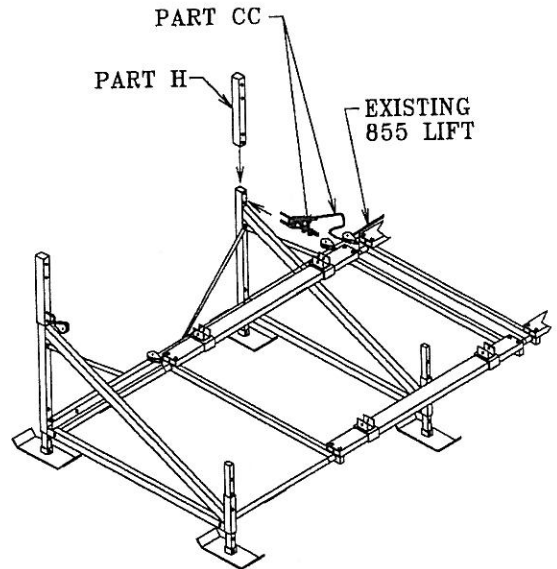
- #12** Attach the BB part (pulley w/ two link chain) and the H part (extension tube) to part A. Use a 3/8" x 4" U-bolt with two 3/8" washers and two 3/8" nuts.

Note: This is the side you will be mounting your winch.

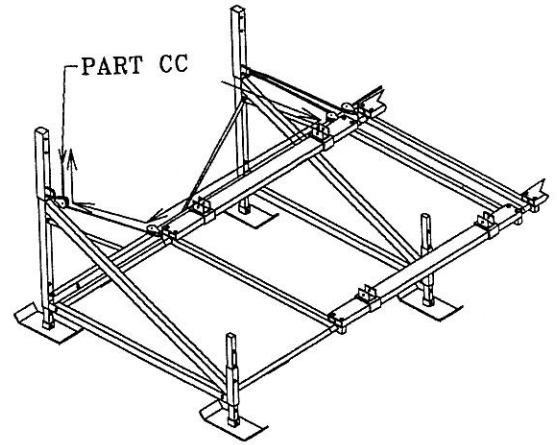
Note: Washers are placed against nut when attaching.



- #13** Thread CC part through all three pulleys as shown.



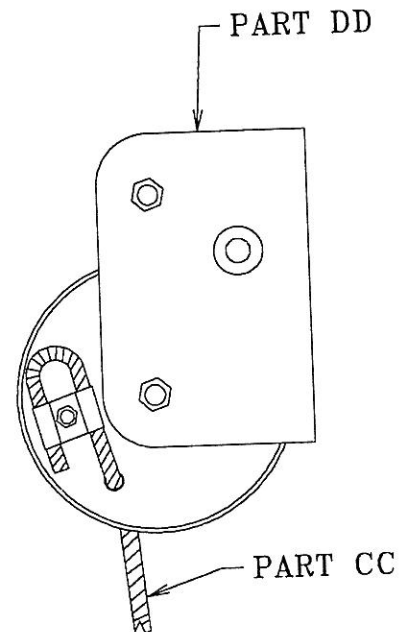
- #14 Attach CC part to DD part (winch) as shown. Use the 1/4" carriage bolt, 1/4" nut and clamp located in the GG part bag.



- #15 Attach DD part to A part upright. Use two 3/8" x 3 1/4" hex bolts with four 3/8" washers and two 3/8" nuts.

Note: One washer is placed against bolt head and one against nut on each connection.

Note: If attaching winch to other A part upright you will turn this winch upside down. Spool end will be facing up instead of on bottom as shown.



- #16 Place the FF parts over front upright (H part) as shown. Place the EE part over rear B parts as shown.

CAUTION

Be sure blue caps are on rear legs. Your watercraft may come in contact with legs during loading or unloading. If caps are not in place you could scratch or gouge watercraft.

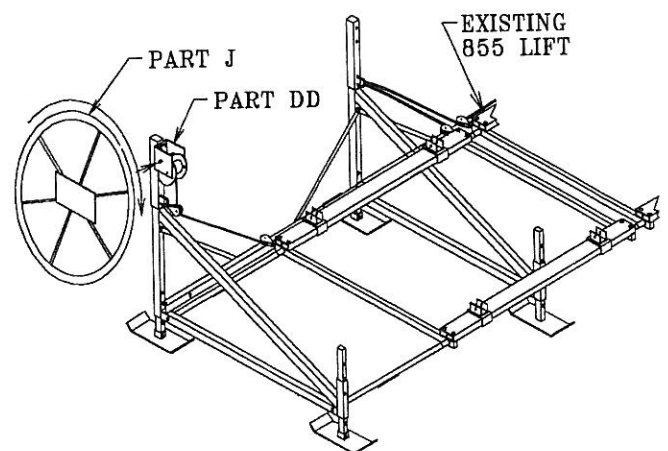
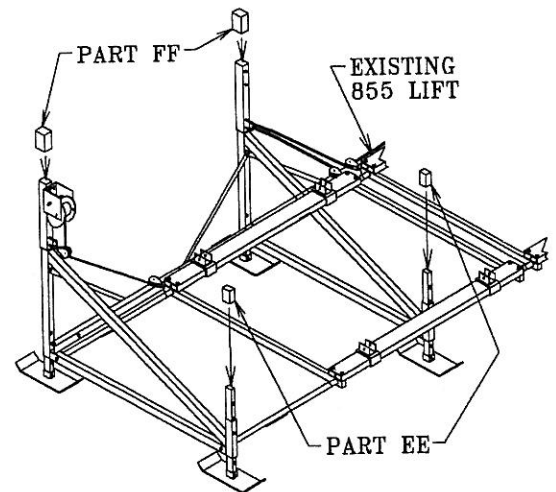
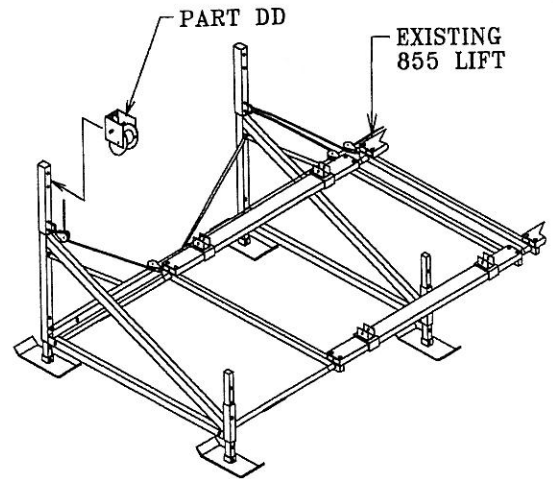
- #17 Thread J part (wheel) clockwise on to shaft of DD part so it is touching brake pads. Secure in place as shown by attaching 5/16" hex bolt, washer, and spacer located in GG part bag.

Note: Spring located in GG bag is not used with this lift model. Do not use when attaching wheel.

Note: You will need to cut a small round hole in middle of wheel sticker to attach bolt.

Note: Do not over tighten this bolt. You could break bolt if you over tighten or cause the brake to function improperly.

Note: You must thread wheel all the way on winch shaft. The wheel hub must be fully up against brake pad and a clicking sound must be heard when turning wheel up!



#18 Thread excess cable onto winch hub by turning wheel clockwise at this time. Applying tension to cable, by holding it tight when raising wheel, will help to develop proper wrap.

CAUTION

Be sure cable wraps tight and uniformly on hub.

Do not allow cable to stack on one side of hub or allow cable to wind up loosely on hub. Cables wrapping incorrectly will result in rapid cable wear.

CAUTION

Use a leather glove or other hand protection to avoid cuts when applying cable pressure.

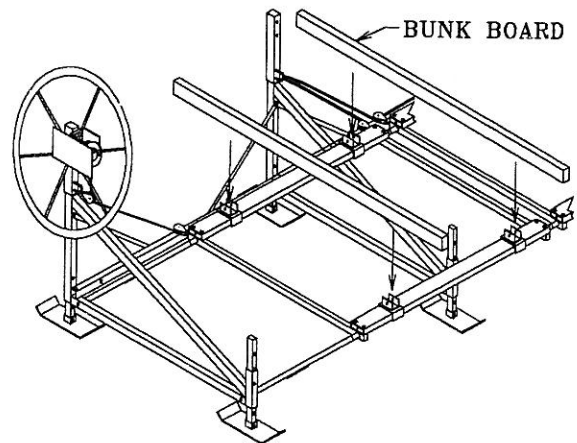
#19 Position F parts (bunk brackets) allowing proper fit of watercraft. Use four 1/2" x 1 1/4" square head bolts with 1/2" square nuts.

Note: Use set screw wrenches provided to prevent over tightening.

#20 Attach four bunk boards (accessory not included with lift) to eight F parts as shown. Use eight 3/8" x 2 1/2" hex bolts with 3/8" nuts.

Note: ShoreMaster offers carpeted bunk boards or your dealer may supply bunk boards. Contact your dealer for details.

#21 Firmly secure bolts and nuts at this time. Do not over tighten connections using lock nuts or set screws.



INSTALLATION

The following are guidelines or suggestions for installation. Situations vary between installation sites. Common sense may dictate that other factors be considered in your situation. Your site may not allow for some of our suggestions to be used or followed entirely. Do not, under any circumstances, endanger yourself or risk damage to lift or watercraft when installing.

CAUTION

If you are unable to properly and safely install this boat lift, **please have a trained boat lift installer perform the installation.**

#1 Measure water depth of exact position you want to locate lift.

#2 Before installing, adjust lift legs so lift can be properly positioned in water.

Note: Lift must be positioned low enough so watercraft can float into position before raising, while also allowing high enough position so the watercraft can be fully raised up and out of water.

Note: Lift rack must always be in partially raised position before any weight is applied. Lift rack must never rest flat when in use. Adjust lift legs down or move lift to deeper water if this is a problem!!!

CAUTION

Never apply weight on lift when top rack is in fully lowered position. Doing this will bend lift frame and cause permanent damage to lift.

#3 Tie lift rack securely to upright. This will prevent rack from pivoting when moving lift into position.

Note: Remove ropes when lift is in place.

CAUTION

A freely pivoting lift rack could cause a pinching or cutting injury during installation. Be sure lift rack is properly secured when installing. Never move or lift your boat lift by grabbing the lift rack or I-beams.

#4 Carry, lift, roll, float or slide lift into position. Position alongside dock so hand wheel can be easily operated from dock.

CAUTION

Lift must be resting on lake bottom in a level, secure and stable position for safe operation. An unstable lift installation could result in tipping of lift during operation, causing damage to watercraft, and crushing or pinching injury to operator.

OPERATION

-Loading of Watercraft-

CAUTION

Remove safety ropes before using lift. Be sure when removing that cable is wrapped tight. Winch up excess cable to avoid rack dropping when undoing ropes.

**WARRANTY DOES NOT
APPLY IF DAMAGE IS
CAUSED BY IMPROPER
LOADING!!**

#1 Be sure lift rack and cradles or bunks are positioned below water surface so they will not interfere with craft floating into position.

CAUTION

Be sure craft is properly balanced and centered on lift before raising.

CAUTION

If lift is without a craft in it for more than one day, raise the rack (pulleys and cable) fully out of the water to prevent fast corrosion of these parts.

#2 Position craft with center of gravity near middle of lift. For most rear engine mounted crafts, this requires you to position the craft mostly forward in the lift.

-Raising Lift-

#1 Make sure craft is in proper position. Turn lift wheel clockwise (in direction of up arrow). Stop turning wheel when craft reaches desired height out of the water.

WARNING

Stay clear of lift (facing wheel) while operating. Do not allow anyone on, in or under lift. A cable or lift part failure can cause a sudden drop of craft, resulting in a crushing or falling injury or death!

CAUTION

Turn wheel in direction of arrow (clockwise) to raise lift. A clicking sound is heard when properly raising lift. Turning wheel and wrapping cable in wrong direction will cause fast spin down of wheel.

CAUTION

If fast spin down of wheel occurs do not touch wheel or attempt to stop. Placing hands or feet on spinning wheel can cause broken or cut limbs.

CAUTION

Properly cover your craft, when in raised position, if rain can gather in your craft. An inch of rain adds several pounds to lift. Added weight may result in craft being over capacity.

CAUTION

Do not over raise lift rack. If wheel is over rotated and rack is over raised it could cause damage to lift and may leave you unable to lower lift back down.

#2 Optional: Lock and chain wheel for security.
You may also lock and chain rack to lift upright to
secure craft from cable or winch failure.

CAUTION

Do not allow people on craft when in a raised
position on lift. Entering craft when in the raised
position adds to lift load and is not safe! A falling
injury could occur should lift fail.

CAUTION

Do not allow anyone who is in the water within six
feet of the lift. A crushing injury could occur to
swimmer should cable, winch brake or lift part fail.

-Lowering Lift-

#1 Turn wheel counterclockwise (in direction of
down arrow).

Note: Turn wheel down one or two turns
past point when craft begins to float (This must
always be at some point before lift rack is
contacting rear bottom beam). Then turn wheel up
slightly until clicking sound is heard to secure
wheel position and brake on winch.

CAUTION

Winch Safety - Never disconnect ratchet pawl, gear
or brake mechanism to lower lift wheel.
Disconnected or faulty brake parts will result in
rapid spinning of wheel.

CAUTION

Do not over lower wheel so slack develops in cable.
Doing this could cause cable to jump off winch
spool. This may result in sloppy wrapping of cable
next time you raise the lift, resulting in premature
wear or cable breaking.

REMOVAL & STORAGE (winterizing)

****ShoreMaster does not warrant this product against any damage caused or related to ice!!**

CAUTION

Ice can severely damage your boat lift. Do not leave lift, or craft on lift, in water if ice damage is possible.

#1 Tie lift rack securely to upright. This will prevent rack from pivoting when moving lift out of water.

CAUTION

A freely pivoting lift rack could cause a pinching or cutting injury during removal. Be sure lift rack is properly secured when removing. Never move or lift your boat lift by grabbing the lift rack or I-beams.

#2 Carry, lift, roll, float or slide lift out of water. Position safely away from potential ice build up.

SERVICE (Maintenance)

#1 Inspect nuts and bolts at least every six months for damage, wear or loose connections. Tighten or replace parts as needed.

CAUTION

Check cables for frays, corrosion or breaks at least once a month. A cable breaking while craft is in lift could damage craft or lift. Severe bodily injury could also occur.

#2 Inspect lift frame, pulleys, winch and pivot points at least every six months for unusual wear, damage or bent parts. Replace or repair as needed.

#3 Lubricate winch and wheel threads at least every six months.

Note: Do not get lubricant on brake pads!
Brake will fail and wheel will spin down if brake pads are lubricated.

#4 Lubricate pulleys at least every six months.

#5 ShoreMaster dealers usually offer service visits. Please contact them if you are unable or unwilling to perform maintenance or service to lift.